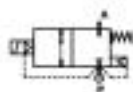


2/2 WAY PILOT OPERATED SOLENOID VALVE, G 1/4" ÷ G 1"



normally closed

TYPE: B203/204/205/206/222

TECHNICAL SPECIFICATIONS

Media: water, oil, air

Media temperature: -10°C ÷ +90°C

Ambient temperature: -10°C ÷ +50°C

Body material: brass (CW617N EN 12165)

Operator material: stainless steel

Operator seal material: NBR

Seal and Diaphragm material: NBR

Coil power: AC 10VA (holding)

AC 16VA (inrush)

DC 7W

Protection class: IP 65 (with connector)



OPTIONS

Normally open (Ex. code RB206DBY)

Manual override (Ex. code B204DBZM)

Speed control screw (only for B206DBYV and B222DBYV)

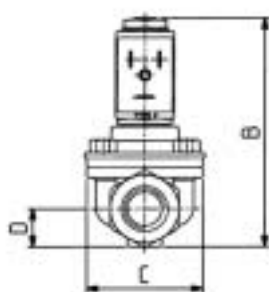
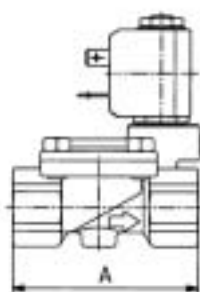
EPDM seal for air and hot water MAX 120°C (Ex. code B204DEZ)

FKM seal for air, water, oil MAX 130°C (Ex. code B204DVZ)

Version with operator ø 14,5 and coil type 7000 available on request (Ex. code D205DBZ)

SELECTION TABLE

VALVE	G connection	Nominal Diameter	Flow rate kvs	OPD			COILS	
				min	max		Code	[Volts/Hz]
Code	[ISO 228]	[mm]	[l/min]	[bar]	AC [bar]	DC [bar]	Code	[Volts/Hz]
B203DBZ	1/4"	13	26	0.3	16	16	2250	24V DC
B204DBZ	3/8"	13	55	0.3	16	16	2200	24V 50/60Hz
B205DBZ	1/2"	13	63	0.3	16	16	2400	110V 50Hz - 120V 60Hz
B206DBX compact	3/4"	21	90	0.3	16	16	2600	200V 50Hz - 220V 60Hz
B206DBY	3/4"	25	140	0.3	16	16	2700	230V 50Hz - 240V 60Hz
B222DBY	1"	25	216	0.3	16	16		



DIMENSIONS & WEIGHTS

G connection	A	B	C	D	weight
[ISO 228]	[mm]	[mm]	[mm]	[mm]	[Kg]
1/4"	67	90	44	15	0.4
3/8"	67	90	44	15	0.4
1/2"	67	90	44	15	0.4
3/4" compact	82	105	50	20.25	0.6
3/4"	96	115	70	23	1.2
1"	96	115	70	23	1.2