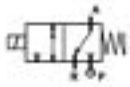


3/2 WAY DIRECT ACTING SOLENOID VALVE, G 1/8"



normally closed

TYPE: B398

TECHNICAL SPECIFICATIONS

Media: water, oil, air, aggressive fluids

Media temperature: -10°C ÷ +130°C

Ambient temperature: -10°C ÷ +50°C

Body material: stainless steel (AISI 303 EN 10088-3)

Orifice material: stainless steel (AISI 303 EN 10088-3)

Operator material: stainless steel

Seal material: foodgrade FKM A80

Coil power: AC 10VA (holding)

AC 16VA (inrush)

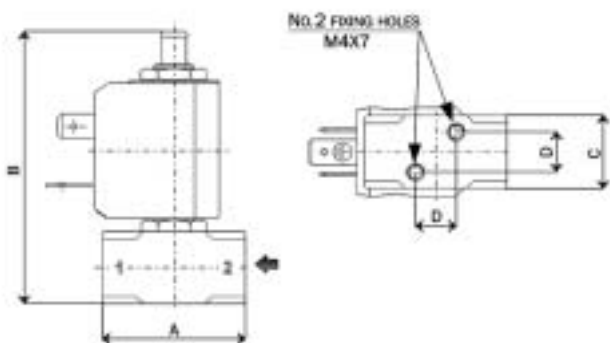
DC 7W

Protection class: IP 65 (with connector)



SELECTION TABLE

VALVE	G connection	Nominal Diameter	Flow rate kvs	OPD			COILS	
				min	max		Code	[Volts/Hz]
Code	[ISO 228]	[mm]	[l/min]	[bar]	AC [bar]	DC [bar]	Code	[Volts/Hz]
B398EV2	1/8"	1.2	0.7	0	15	15	2250	24V DC
B398EV3	1/8"	1.5	1.0	0	10	10	2200	24V 50/60Hz
B398EV5	1/8"	2.0	1.9	0	5	5	2400	110V 50Hz - 120V 60Hz
B398EV7	1/8"	2.5	2.7	0	3	3	2600	200V 50Hz - 220V 60Hz
							2700	230V 50Hz - 240V 60Hz



DIMENSIONS & WEIGHTS

G connection	A	B	C	D	weight
[ISO 228]	[mm]	[mm]	[mm]	[mm]	[Kg]
1/8"	35	68	18	10	0.1