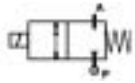


2/2 WAY DIRECT ACTING SOLENOID VALVE, G 1/8" - G 1/4"

HIGH PRESSURE



normally closed

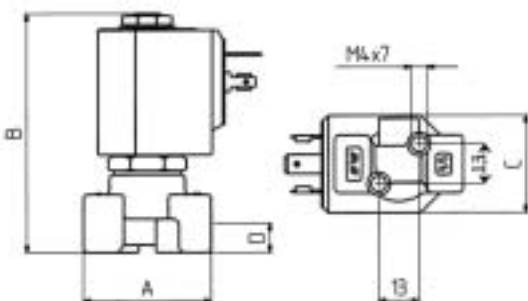
TYPE: D262/263

TECHNICAL SPECIFICATIONS

Media:	water, steam
Media temperature:	-10°C ÷ +130°C
Ambient temperature:	-10°C ÷ +50°C
Body material:	brass (CW617N EN 12165)
Orifice material:	stainless steel (AISI 303 UNIEN 10088-3)
Operator material:	stainless steel
Seal material:	Ruby
Coil power:	AC 18VA (holding) AC 36VA (inrush) DC 14W
Protection class:	IP 65 (with connector)



SELECTION TABLE	VALVE	G connection	Nominal Diameter	Flow rate kvs	OPD			COILS	
					min	max		Code	[Volts/Hz]
	Code	[ISO 228]	[mm]	[l/min]	[bar]	AC [bar]	DC [bar]	Code	[Volts/Hz]
	D262DRA1	1/8"	1.0	0.5	0	150	70	7250	24V DC
	D262DRB1	1/8"	1.2	0.7	0	150	70	7200	24V 50/60Hz
	D262DRC1	1/8"	1.5	1.3	0	150	70	7400	110V 50Hz - 120V 60Hz
	D263DRA1	1/4"	1.0	0.5	0	150	70	7600	200V 50Hz - 220V 60Hz
	D263DRB1	1/4"	1.2	0.7	0	150	70	7700	230V 50Hz - 240V 60Hz
	D263DRC1	1/4"	1.5	1.3	0	150	70		



DIMENSIONS & WEIGHTS	G connection	A	B	C	D	weight
	[ISO 228]	[mm]	[mm]	[mm]	[mm]	[Kg]
	1/8"	40	77.5	32	11	0.26
	1/4"	40	77.5	32	11	0.26