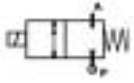


2/2 WAY DIRECT ACTING SOLENOID VALVE, G 1/8" - G 1/4"



normally closed

TYPE: D262/263

TECHNICAL SPECIFICATIONS

Media: water, steam

Media temperature: $-10^{\circ}\text{C} \div +180^{\circ}\text{C}$

Ambient temperature: $-10^{\circ}\text{C} \div +70^{\circ}\text{C}$

Body material: brass (CW617N EN 12165)

Orifice material: stainless steel (AISI 303 EN 10088-3)

Operator material: stainless steel

Seal material: Sigodur (filled PTFE)

Coil power: AC 18VA (holding)

AC 36VA (inrush)

DC 14W

Protection class: IP 65 (with connector)

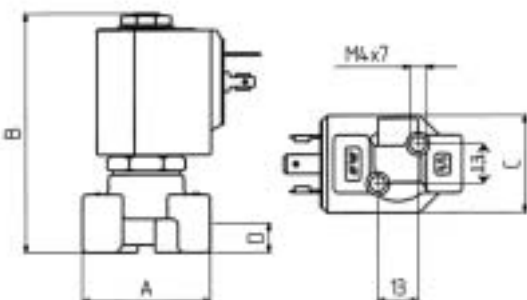
OPTIONS

Manual override (Ex. code D262DLAM)



SELECTION TABLE

VALVE	G connection	Nominal Diameter	Flow rate kvs	OPD			COILS	
				min	max		class "H" only	
Code	[ISO 228]	[mm]	[l/min]	[bar]	AC [bar]	DC [bar]	Code	[Volts/Hz]
D262DLA	1/8"	1.0	0.5	0	10	10	7251	24V DC
D262DLC	1/8"	1.5	1.3	0	10	10	7201	24V 50/60Hz
D262DLG	1/8"	2.5	3.4	0	10	10	7401	110V 50Hz - 120V 60Hz
D262DLH	1/8"	3.0	4.5	0	10	8	7601	200V 50Hz - 220V 60Hz
D263DLA	1/4"	1.0	0.5	0	10	10	7701	230V 50Hz - 240V 60Hz
D263DLC	1/4"	1.5	1.3	0	10	10		
D263DLG	1/4"	2.5	3.4	0	10	10		
D263DLH	1/4"	3.0	4.5	0	10	8		



DIMENSIONS & WEIGHTS

G connection	A	B	C	D	weight
[ISO 228]	[mm]	[mm]	[mm]	[mm]	[Kg]
1/8"	40	77.5	32	11	0.26
1/4"	40	77.5	32	11	0.26