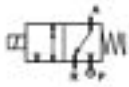


## 3/2 WAY DIRECT ACTING SOLENOID VALVE, FLANGE 32x32



normally closed

TYPE: D301

### TECHNICAL SPECIFICATIONS

Media: water, oil, air

Media temperature: -10°C ÷ +130°C

Ambient temperature: -10°C ÷ +50°C

Body material: brass (CW617N EN 12165)

Orifice material: stainless steel (AISI 303 EN 10088-3)

Operator material: stainless steel

Seal material: FKM

Coil power: AC 18VA (holding)

AC 36VA (inrush)

DC 14W

Protection class: IP 65 (with connector)



### OPTIONS

Normally open (Ex. code RD301CVG) with coils class "H" only

Manual override (Ex. code D301AVCM)

EPDM seal for air and hot water MAX 120°C (Ex. code D301CEC)

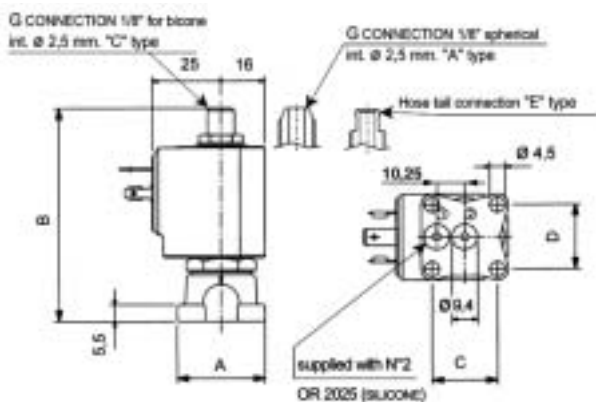
RUBY seal -10°C +180°C for high temperature with class "H" coils (Ex. code D301ARB 7201)

Armature tube with G connection 1/8" spherical (Ex. code D301AVC)

Armature tube with hose tail ø 6 mm (Ex. code D301EVE)

SELECTION TABLE

VALVE	Square base	Nominal Diameter	Flow rate kvs	OPD			COILS	
				min	max		Code	[Volts/Hz]
Code	[ISO 228]	[mm]	[l/min]	[bar]	AC [bar]	DC [bar]	Code	[Volts/Hz]
D301CVC	32x32	1.5	1.3	0	18	18	7250	24V DC
D301CVE	32x32	2.0	2.2	0	10	10	7200	24V 50/60Hz
D301CVG	32x32	2.5	3.4	0	7	7	7400	110V 50Hz - 120V 60Hz
							7600	200V 50Hz - 220V 60Hz
							7700	230V 50Hz - 240V 60Hz



DIMENSIONS & WEIGHTS

square base	A	B	C	D	weight
[mm]	[mm]	[mm]	[mm]	[mm]	[Kg]
32x32	32	77	24	24	0.25