

Steckverbinder A

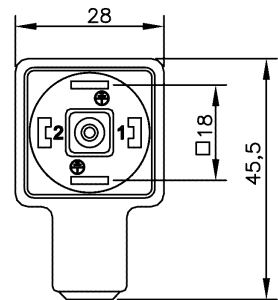
Mit Anschlußleitung

DIN 43 650 / EN 175301 - 803

Connector A

Pre-wired

Kontaktabstand Contact spacing	18 mm
Nennspannung Rated voltage	250 VAC / 300 VDC
Dauerstrom Operating current	10 A
PVC-Leitung PVC-cable	3x0,75 mm ² / 4x0,75 mm ²
Leitungsdurchmesser Cable diameter	6-7 mm
Schutzart Protection class	IP67
Gehäusematerial Housing material	PUR
Befestigungsschraube Screw	M3
Temperaturbereich Temperature range	-25° C ... +80° C



Kontaktabstand Contact spacing	Polzahl Contacts	Artikel Nr. Part No.	Artikel Nr. Part No.	Artikel Nr. Part No.
		3 m	5 m	10 m
18 mm	2+PE	CDA30US6013	CDA30US6015	CDA30US6010
18 mm	3+PE	CDA40US6013	CDA40US6015	CDA40US6010

Technische Änderungen vorbehalten, Maßzeichnungen auf Anfrage / Specifications are subject to change without notice, scale drawings on request

Steckverbinder A

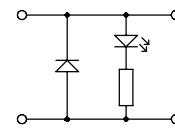
Mit Anschlußleitung und LED

DIN 43 650 / EN 175301-803

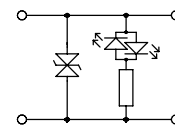
Connector A

Pre-wired with LED

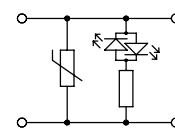
Kontaktabstand Contact spacing	18 mm
Nennspannung Rated voltage	24 V
Dauerstrom Operating current	10 A
Betriebsanzeige Operating indicator	LED gelb LED yellow
Schutzbeschaltung Protection circuit	ja yes
PVC-Leitung PVC-cable	3x0,75 mm ²
Leitungsdurchmesser Cable diameter	6-7 mm
Schutzart Protection class	IP67
Gehäusematerial Housing material	PUR
Befestigungsschraube Screw	M3
Temperaturbereich Temperature range	-25° C ... +80° C



YD: LED + Diode 24VDC



YT: LED + Z-Diode 24VAC/DC



YV: LED + Varistor 24VAC/DC

Kontaktabstand Contact spacing	Polzahl Contacts	Artikel Nr. Part No.	Artikel Nr. Part No.	Artikel Nr. Part No.	Besonderheit Special Feature
		3 m	5 m	10 m	
18 mm	2+PE	CDA3YDUT2013	CDA3YDUT2015	CDA3YDUT2010	LED + Diode
18 mm	2+PE	CDA3YTUT2013	CDA3YTUT2015	CDA3YTUT2010	LED + Z-Diode
18 mm	2+PE	CDA3YVUT2013	CDA3YVUT2015	CDA3YVUT2010	LED + Varistor

Technische Änderungen vorbehalten, Maßzeichnungen auf Anfrage / Specifications are subject to change without notice, scale drawings on request

Steckverbinder B

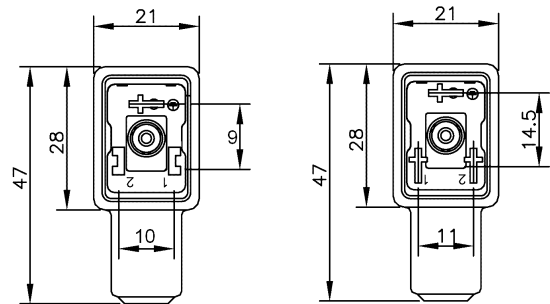
Mit Anschlußleitung

Industrial / DIN 43 650 / EN 175301 - 803

Connector B

Pre-wired

Kontaktabstand Contact spacing	10 mm (DIN/EN) 11 mm (Industrial)
Nennspannung Rated voltage	250 VAC / 300 VDC
Dauerstrom Operating current	10 A
PVC-Leitung PVC-cable	3x0,75 mm ²
Leitungsdurchmesser Cable diameter	6-7 mm
Schutzart Protection class	IP67
Gehäusematerial Housing material	PUR
Befestigungsschraube Screw	M3
Temperaturbereich Temperature range	-25° C ... +80° C



Kontaktabstand Contact spacing	Polzahl Contacts	Artikel Nr. Part No.	Artikel Nr. Part No.	Artikel Nr. Part No.
		3 m	5 m	10 m
10 mm (DIN/EN)	2+PE	CDB300S6013	CDB300S6015	CDB300S6010
11 mm (Industrial)	2+PE	CIB300S6013	CIB300S6015	CIB300S6010

Technische Änderungen vorbehalten, Maßzeichnungen auf Anfrage / Specifications are subject to change without notice, scale drawings on request

Steckverbinder B

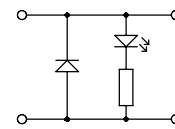
Mit Anschlußleitung und LED

Industrial / DIN 43 650 / EN 175301 - 803

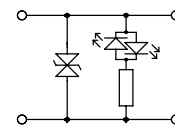
Connector B

Pre-wired with LED

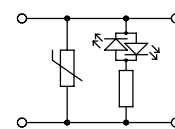
Kontaktabstand Contact spacing	10 mm (DIN/EN) 11 mm (Industrial)
Nennspannung Rated voltage	24 V
Dauerstrom Operating current	10 A
Betriebsanzeige Operating indicator	LED gelb LED yellow
Schutzbeschaltung Protection circuit	ja yes
PVC-Leitung PVC-cable	3x0,75 mm ²
Leitungsdurchmesser Cable diameter	6-7 mm
Schutzart Protection class	IP67
Gehäusematerial Housing material	PUR
Befestigungsschraube Screw	M3
Temperaturbereich Temperature range	-25° C ... +80° C



YD: LED+Diode 24VDC



YT: LED+Z-Diode 24VAC/DC



YV: LED+Varistor 24VAC/DC

Kontaktabstand Contact spacing	Polzahl Contacts	Artikel Nr. Part No.	Artikel Nr. Part No.	Artikel Nr. Part No.	Besonderheit Special Feature
		3m	5m	10m	
10 mm (DIN/EN)	2+PE	CDB3YD0T2013	CDB3YD0T2015	CB3YD0T2010	LED + Diode
10 mm (DIN/EN)	2+PE	CDB3YT0T2013	CDB3YT0T2015	CDB3YT0T2010	LED + Z-Diode
10 mm (DIN/EN)	2+PE	CDB3YV0T2013	CDB3YV0T2015	CDB3YV0T2010	LED + Varistor
11 mm (Industrial)	2+PE	CIB3YD0T2013	CIB3YD0T2015	CIB3YD0T2010	LED + Diode
11 mm (Industrial)	2+PE	CIB3YT0T2013	CIB3YT0T2015	CIB3YT0T2010	LED + Z-Diode
11 mm (Industrial)	2+PE	CIB3YV0T2013	CIB3YV0T2015	CIB3YV0T2010	LED + Varistor

Technische Änderungen vorbehalten, Maßzeichnungen auf Anfrage / Specifications are subject to change without notice, scale drawings on request

Steckverbinder C

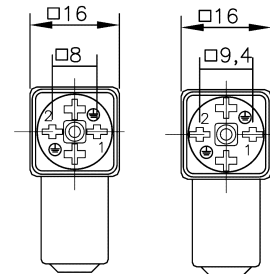
Mit Anschlußleitung

Industrial / DIN 43 650 / EN 175301 - 803

Connector C

Pre-wired

Kontaktabstand Contact spacing	8 mm (DIN/EN) 9,4 mm (Industrial)
Nennspannung Rated voltage	250 VAC / 300 VDC
Dauerstrom Operating current	6 A
PVC-Leitung PVC-cable	3x0,5 mm ²
Leitungsdurchmesser Cable diameter	5-6 mm
Schutzart Protection class	IP67
Gehäusematerial Housing material	PUR
Befestigungsschraube Screw	M2.5 (DIN/EN) M3 (Industrial)
Temperaturbereich Temperature range	-25° C ... +80° C



Kontaktabstand Contact spacing	Polzahl Contacts	Artikel Nr. Part No.	Artikel Nr. Part No.	Artikel Nr. Part No.
		3 m	5 m	10 m
8 mm (DIN/EN)	2+PE	CDC30US6013	CDC30US6015	CDC30US6010
9,4 mm (Industrial)	2+PE	CIC30US6013	CIC30US6015	CIC30US6010

Technische Änderungen vorbehalten, Maßzeichnungen auf Anfrage / Specifications are subject to change without notice, scale drawings on request

Steckverbinder C

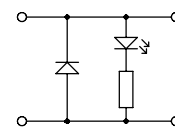
Mit Anschlußleitung und LED

Industrial / DIN 43 650 / EN 175301 - 803

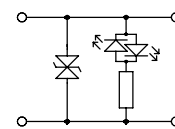
Connector C

Pre-wired with LED

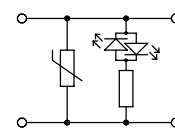
Kontaktabstand Contact spacing	8 mm (DIN/EN) 9,4 mm (Industrial)
Nennspannung Rated voltage	24 V
Dauerstrom Operating current	6 A
Betriebsanzeige Operating indicator	LED gelb LED yellow
Schutzbeschaltung Protection circuit	ja yes
PVC-Leitung PVC-cable	3x0,5 mm ²
Leitungsdurchmesser Cable diameter	5-6 mm
Schutzart Protection class	IP67
Gehäusematerial Housing material	PUR
Befestigungsschraube Screw	M2.5 (DIN/EN) M3 (Industrial)
Temperaturbereich Temperature range	-25° C ... +80° C



YD: LED + Diode 24VDC



YT: LED + Z-Diode 24VAC/DC



YV: LED + Varistor 24VAC/DC

Kontaktabstand Contact spacing	Polzahl Contacts	Artikel Nr. Part No.	Artikel Nr. Part No.	Artikel Nr. Part No.	Besonderheit Special Feature
		3m	5m	10m	
8 mm (DIN/EN)	2+PE	CDC3YDUT2013	CDC3YDUT2015	CDC3YDUT2010	LED + Diode
8 mm (DIN/EN)	2+PE	CDC3YTUT2013	CDC3YTUT2015	CDC3YTUT2010	LED + Z-Diode
8 mm (DIN/EN)	2+PE	CDC3YVUT2013	CDC3YVUT2015	CDC3YVUT2010	LED + Varistor
9,4 mm (Industrial)	2+PE	CIC3YDUT2013	CIC3YDUT2015	CIC3YDUT2010	LED + Diode
9,4 mm (Industrial)	2+PE	CIC3YTUT2013	CIC3YTUT2015	CIC3YTUT2010	LED + Z-Diode
9,4 mm (Industrial)	2+PE	CIC3YVUT2013	CIC3YVUT2015	CIC3YVUT2010	LED + Varistor

Technische Änderungen vorbehalten, Maßzeichnungen auf Anfrage / Specifications are subject to change without notice, scale drawings on request